

Best-Fitting High-Performance Footwear




montrail®



Wong Wai Kin 黃偉建 (Hong Kong 香港)

Kin is the Training Consultant, who is enthusiastic in trail running and adventure sports. His accomplishments in local races were 1st at Outwardbound AR 2003, 1st at Chongqing Adventure Race 2003, 2nd at Raleigh International Mountain Marathan Invitation Category 2002 & 2003, 2nd at Super Trailwalker 2003 (team Protrek Montrail Dudes), etc.

亞建現職野外訓練顧問，熱愛山路長跑及越野運動。本地賽事之成就包括「外展越野挑戰賽2003」，「重慶武隆國際山地越野挑戰賽2003」總冠軍，「國際雷利山頭霸王」邀請組2002及2003亞軍，「超級毅行者」2003亞軍（隊伍Protrek Montrail Dudes）等。

Leona Divide

With the feel and cushioned ride of a road shoe, Leona Divide provides exceptional traction, breathability, stability and protection. Lightweight, low-to-the-ground design make it a favorite of off-road runners and adventure racers. Medial posting controls pronation for high-mileage excursions.

Upper: Hydrophobic synthetic leather/mesh dries quickly after crossing streams

Lining: Nylex

Sole Components: Dual-density Elon EVA + Full-length Terraflex™ LD + FasTrax carbon rubber outsole

有跑路鞋的彈力感之餘，卻能提供極佳之帶動力、透氣度、穩定性及保護能力。輕巧及低鞋床設計適合山路賽及越野賽手。特別用於長途路程時，內側定位有助控制跑步時之旋前傾向。

面層：撥水快乾人造皮面加透氣網，過溪潤後都能快乾

內裡：Nylex透氣網

鞋底結構：雙層密度Elon EVA合成料 + 全掌Terraflex™ LD + FasTrax碳纖橡膠外底



Men 男

Women 女

Hurricane Ridge XCR

It is versatile, high-performance in rugged, wet, or snowy conditions. Highly breathable Gore-Tex® XCR waterproof construction keeps feet dry while the aggressive sawtooth tread and wide platform ensure footing in slippery conditions.

Upper: Hydrophobic synthetic leather/mesh dries quickly

Lining: 3-Bar Knit XCR & Stretch Gore-Tex®

Sole Components: Dual-density Elon EVA + Full-length Terraflex™ LD + FasTrax carbon rubber outsole

多功能高表現之防水鞋，尤其在崎嶇、濕滑

地面及雪地上。高度透氣之Gore-Tex® XCR

內布裡令腳部乾爽，同時，攻略性鋸齒鞋底紋及闊平台式設計確保防滑。

面層：撥水快乾人造皮面加透氣網

內裡：3-bar knit XCR 配合彈性Gore-Tex®

鞋底結構：雙層密度Elon EVA合成料 +

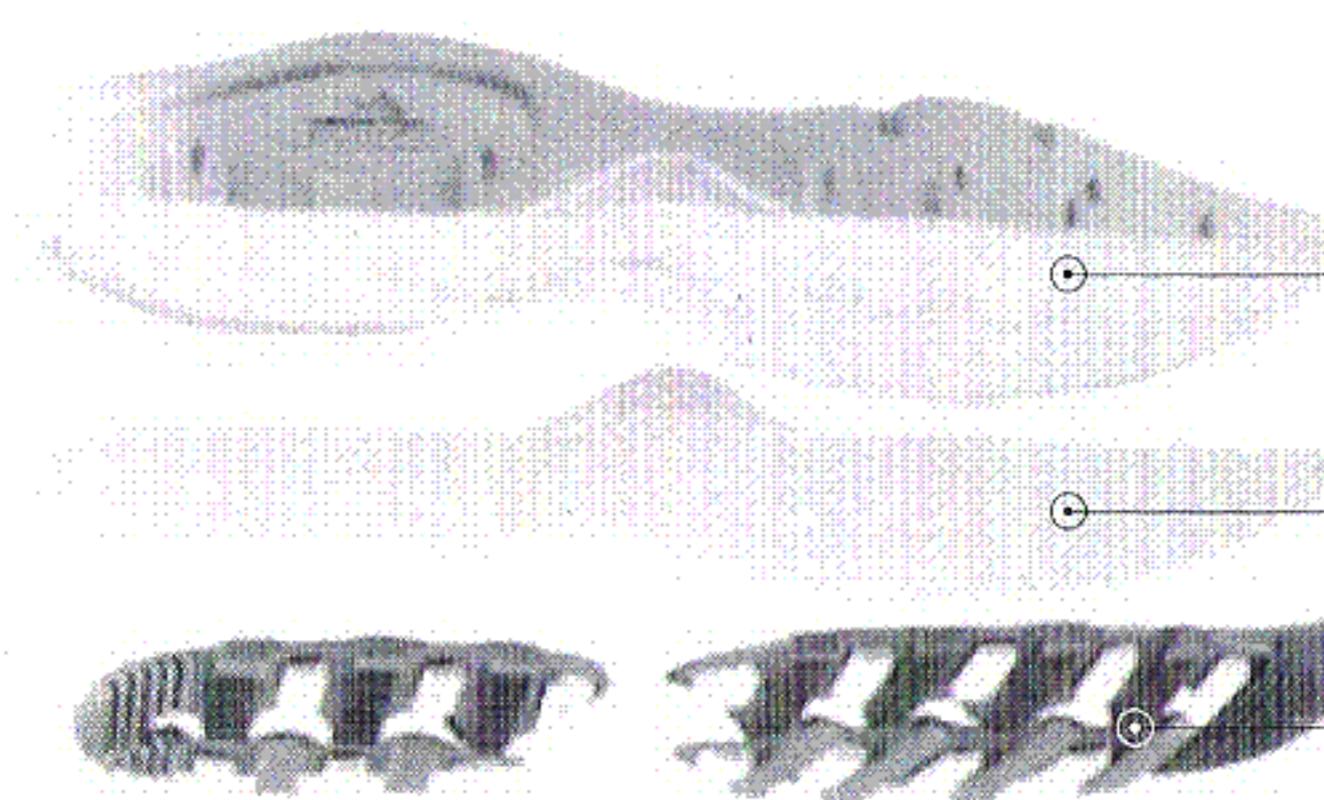
全掌Terraflex® LD + FasTrax碳纖橡膠外底



Women 女

Men 男

Terraflex™ LD Leona Divide, Hurricane Ridge XCR



Elon medially posted for pronation control. Forefoot sidewall wrap for added lateral stability.

彈性EVA中底特別於內側定位，用以控制旋前傾向。前腳掌之護牆設計有助外側穩定性。

Molded protection plate. Designed for full-foot protection with excellent flexibility.

模壓之保護板塊，提供腳掌之全面保護，靈活度佳。

Aggressive sawtooth tread for maximum traction, cut away to reduce weight.

攻略性鋸齒鞋底紋提升帶動力，並且能減輕重量。